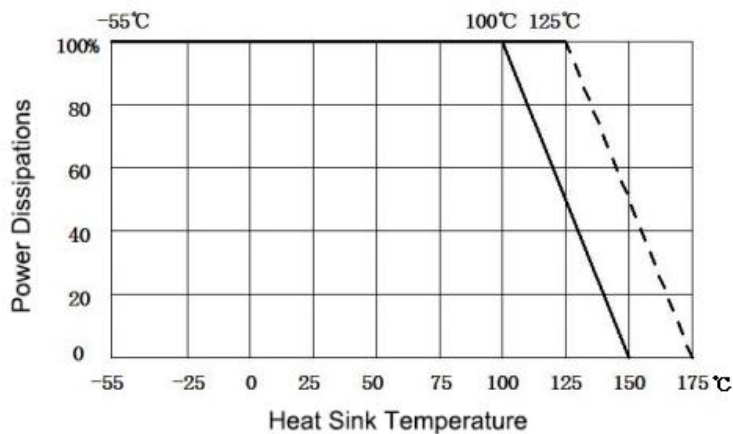


Surface Mount Attenuators

Electrical Features

- ✧ **Input Impedance:** 50Ω
- ✧ **Power Rating:** 10W-250W
- ✧ **Substrate Material:** Aluminum Nitride (AlN)
- ✧ **Frequency Range:** DC-5GHz
- ✧ **Attenuation Value:** 1-30dB
- ✧ **Attenuation Tolerance:** 1-10dB ±0.6dB / 11-20dB ±0.8dB / 21-30dB ±1.0dB
- ✧ **Operating Temperature:** -55°C to +150°C, -55°C to +175°C
- ✧ **Temperature Coefficient:** ±150ppm/°C
- ✧ **RoHS Compliant**

Power Derating



HOW TO ORDER

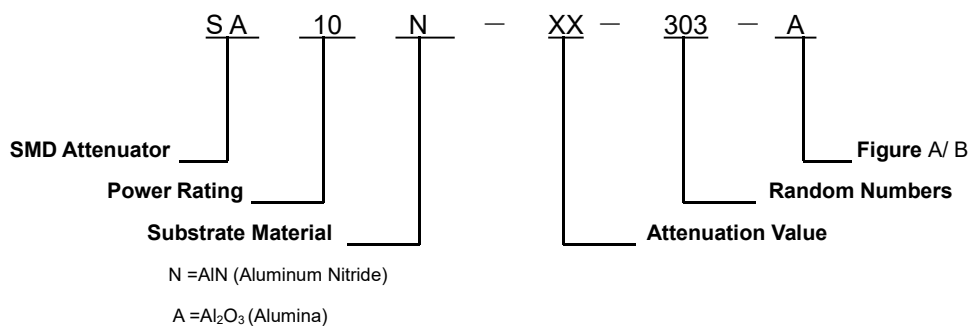


Figure A

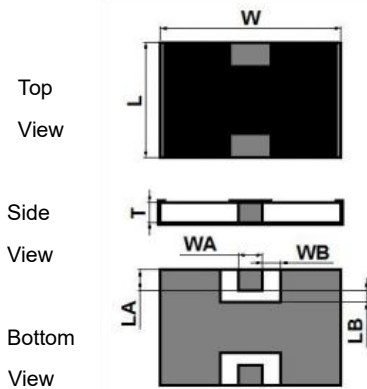
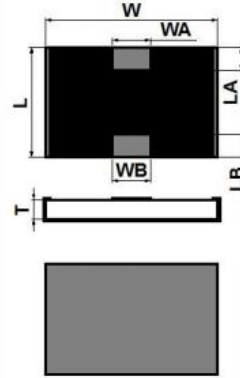


Figure B



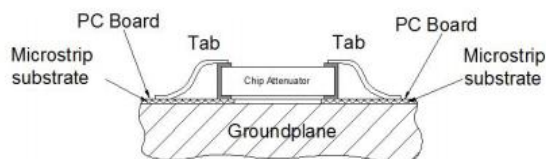
General Specifications and Dimensions

Part Number	Power Rating (W)	Atten. Value (dB)	Freq. (GHz)	VSWR (Max.)	Dimensions (mm)							Outline Drawing
					L	W	T	WA	WB	LA	LB	
SA10N-20-337A	10	20	DC-3	1.35 :1	5.0	2.5	1.0	2.3	2.3	0.2	0.2	Figure A
SA10N-XX-601A	10	1-30	DC-5	1.25 :1	5.0	2.5	0.635	0.7	0.78	1.0	0.7	Figure A
SA20N-30-313A	20	30	DC-4	1.25 :1	5.0	2.5	0.76	0.70	0.78	1.0	0.7	Figure A
SA60N-30-301A	60	30	DC-3	1.35 :1	6.35	6.35	1.0	1.1	1.1	1.0	1.0	Figure A
SA100N-20-513A	100	20	DC-4	1.30 :1	5.7	8.9	1.0	1.2	1.2	1.0	1.0	Figure A
SA100N-30-523A	100	30	DC-4	1.25 :1	5.7	8.9	1.0	1.5	1.5	1.0	1.0	Figure A
SA100N-20-502B	100	20	DC-3	1.20 :1	5.7	8.9	1.0	1.5	1.5	1.0	1.0	Figure B
SA100N-30-501B	100	30	DC-3	1.20 :1	5.7	8.9	1.0	1.2	1.2	1.0	1.0	Figure B
SA150N-20-327B	150	20	DC-3	1.25 :1	6.35	9.5	1.0	1.4	1.40	1.0	1.0	Figure B
SA150N-30-371B	150	30	DC-1	1.25 :1	6.35	9.5	1.0	1.3	1.0	0.75	1.0	Figure B
SA250N-30-007B	250	30	DC-3	1.25 :1	9.5	9.5	1.0	1.3	1.0	0.75	1.0	Figure B

* Customized products are available, please consult with Kete.

Installation Instructions

1. When welding devices or leads, it is best to use a temperature-controlled soldering iron and keep the temperature at 260°C.
2. It is best to make an arch bridge shape at the lead (as shown), which can release the ability of thermal deformation to ensure good contact at the lead. Install the lead as little as possible to prevent the lead break.



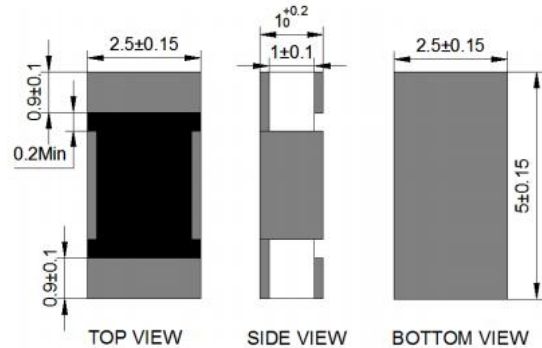
Surface Mount Attenuators

Part Number: SA10N-20-337A

Electrical Specifications

- ✧ **Input Impedance:** 50 Ω
- ✧ **Substrate Material:** AlN
- ✧ **Power Rating:** 10W
- ✧ **Frequency Range:** DC-3GHz
- ✧ **Attenuation Value:** 20dB
- ✧ **Tolerance:** ±0.8 dB
- ✧ **VSWR (Max.):** 1.35 :1
- ✧ **Operating Temperature:** -55°C to +150°C
- ✧ **Temperature Coefficient:** ±150ppm/°C
- ✧ **RoHS Compliant**

Outline Drawing (mm)

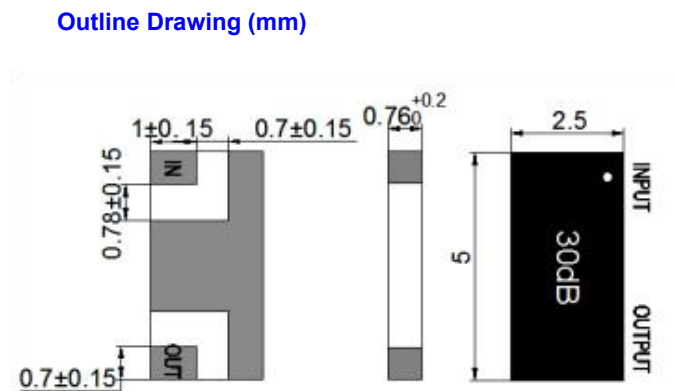


Part Number: SA10N-XX-601A

Electrical Specifications

- ✧ **Input Impedance:** 50 Ω
- ✧ **Substrate Material:** AlN
- ✧ **Power Rating:** 10W
- ✧ **Frequency Range:** DC-5GHz
- ✧ **Attenuation Value:** 1-30dB
- ✧ **Tolerance:** 1-10dB ±0.6dB, 11-20dB ±0.8dB, 21-30dB ±1.0 dB
- ✧ **VSWR (Max.):** 1.25 :1
- ✧ **Operating Temperature:** -55°C to +150°C
- ✧ **Temperature Coefficient:** ±150ppm/°C
- ✧ **RoHS Compliant**

Outline Drawing (mm)

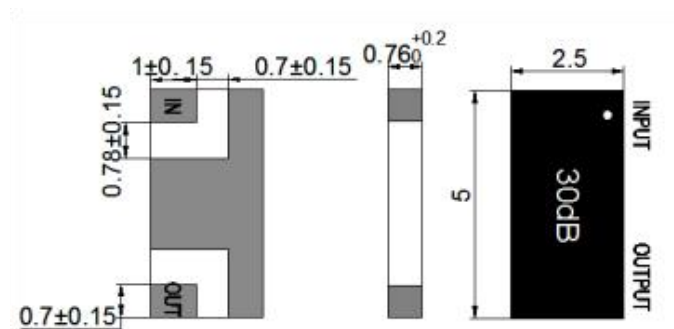


Part Number: SA20N-30-313A

Electrical Specifications

- ✧ **Input Impedance:** 50 Ω
- ✧ **Substrate Material:** AlN
- ✧ **Power Rating:** 20W
- ✧ **Frequency Range:** DC-4GHz
- ✧ **Attenuation Value:** 30dB
- ✧ **Tolerance:** ±1.0 dB
- ✧ **VSWR (Max.):** 1.25 :1
- ✧ **Operating Temperature:** -55°C to +150°C
- ✧ **Temperature Coefficient:** ±150ppm/°C
- ✧ **RoHS Compliant**

Outline Drawing (mm)



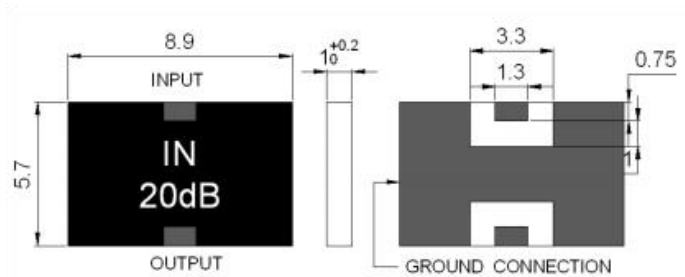
Surface Mount Attenuators

Part Number: SA60N-30-301A

Electrical Specifications

- ✧ **Input Impedance:** 50 Ω
- ✧ **Substrate Material:** AlN
- ✧ **Power Rating:** 60W
- ✧ **Frequency Range:** DC-3GHz
- ✧ **Attenuation Value:** 30dB
- ✧ **Tolerance:** ± 1.0 dB
- ✧ **VSWR (Max.):** 1.35 :1
- ✧ **Operating Temperature:** -55°C to +150°C
- ✧ **Temperature Coefficient:** ± 150 ppm/°C
- ✧ **RoHS Compliant**

Outline Drawing (mm)

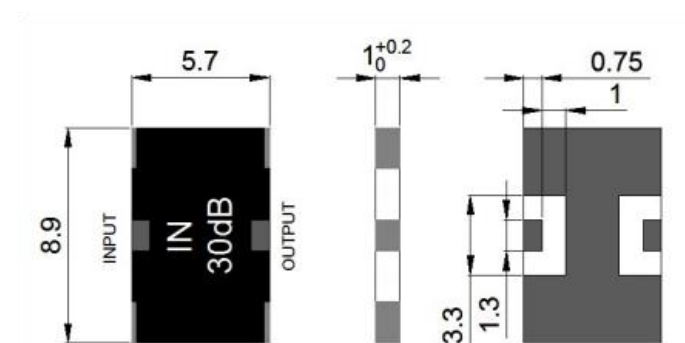


Part Number: SA100N-20-513A

Electrical Specifications

- ✧ **Input Impedance:** 50 Ω
- ✧ **Substrate Material:** AlN
- ✧ **Power Rating:** 100W
- ✧ **Frequency Range:** DC-4GHz
- ✧ **Attenuation Value:** 20dB
- ✧ **Tolerance:** ± 0.8 dB
- ✧ **VSWR (Max.):** 1.30 :1
- ✧ **Operating Temperature:** -55°C to +150°C
- ✧ **Temperature Coefficient:** ± 150 ppm/°C
- ✧ **RoHS Compliant**

Outline Drawing (mm)

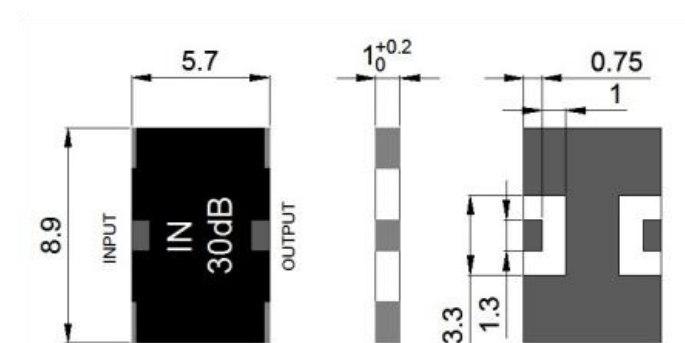


Part Number: SA100N-30-523A

Electrical Specifications

- ✧ **Input Impedance:** 50 Ω
- ✧ **Substrate Material:** AlN
- ✧ **Power Rating:** 100W
- ✧ **Frequency Range:** DC-4GHz
- ✧ **Attenuation Value:** 30dB
- ✧ **Tolerance:** ± 1.0 dB
- ✧ **VSWR (Max.):** 1.30 :1
- ✧ **Operating Temperature:** -55°C to +150°C
- ✧ **Temperature Coefficient:** ± 150 ppm/°C
- ✧ **RoHS Compliant**

Outline Drawing (mm)



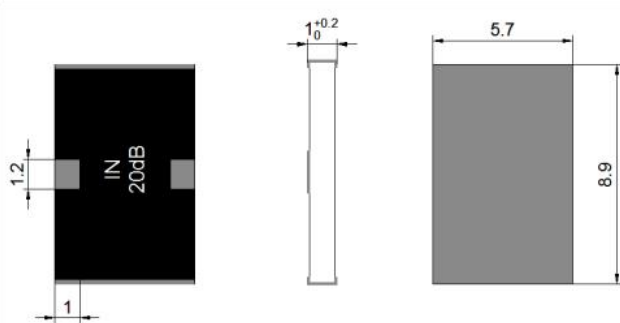
Surface Mount Attenuators

Part Number: SA100N-20-502B

Electrical Specifications

- ✧ **Input Impedance:** 50 Ω
- ✧ **Substrate Material:** AlN
- ✧ **Power Rating:** 100W
- ✧ **Frequency Range:** DC-3GHz
- ✧ **Attenuation Value:** 20dB
- ✧ **Tolerance:** ±0.8dB
- ✧ **VSWR (Max.):** 1.20 :1
- ✧ **Operating Temperature:** -55°C to +150°C
- ✧ **Temperature Coefficient:** ±150ppm/°C
- ✧ **RoHS Compliant**

Outline Drawing (mm)

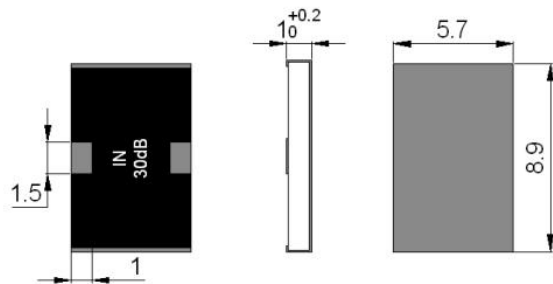


Part Number: SA100N-30-501B

Electrical Specifications

- ✧ **Input Impedance:** 50 Ω
- ✧ **Substrate Material:** AlN
- ✧ **Power Rating:** 100W
- ✧ **Frequency Range:** DC-3GHz
- ✧ **Attenuation Value:** 30dB
- ✧ **Tolerance:** ±1.0dB
- ✧ **VSWR (Max.):** 1.20 :1
- ✧ **Operating Temperature:** -55°C to +150°C
- ✧ **Temperature Coefficient:** ±150ppm/°C
- ✧ **RoHS Compliant**

Outline Drawing (mm)



Part Number: SA150N-20-327B

Electrical Specifications

- ✧ **Input Impedance:** 50 Ω
- ✧ **Substrate Material:** AlN
- ✧ **Power Rating:** 150W
- ✧ **Frequency Range:** DC-3GHz
- ✧ **Attenuation Value:** 20dB
- ✧ **Tolerance:** ±0.8dB
- ✧ **VSWR (Max.):** 1.25 :1
- ✧ **Operating Temperature:** -55°C to +150°C
- ✧ **Temperature Coefficient:** ±150ppm/°C
- ✧ **RoHS Compliant**

Outline Drawing (mm)

Surface Mount Attenuators

Part Number: SA150N-30-371B

Electrical Specifications

- ✧ **Input Impedance:** 50 Ω
- ✧ **Substrate Material:** AlN
- ✧ **Power Rating:** 150W
- ✧ **Frequency Range:** DC-1GHz
- ✧ **Attenuation Value:** 30dB
- ✧ **Tolerance:** ± 1.0 dB
- ✧ **VSWR (Max.):** 1.25 :1
- ✧ **Operating Temperature:** -55°C to +150°C
- ✧ **Temperature Coefficient:** ± 150 ppm/°C
- ✧ **RoHS Compliant**

Outline Drawing (mm)

Part Number: SA250N-30-007B

Electrical Specifications

- ✧ **Input Impedance:** 50 Ω
- ✧ **Substrate Material:** AlN
- ✧ **Power Rating:** 250W
- ✧ **Frequency Range:** DC-3GHz
- ✧ **Attenuation Value:** 30dB
- ✧ **Tolerance:** ± 1.0 dB
- ✧ **VSWR (Max.):** 1.25 :1
- ✧ **Operating Temperature:** -55°C to +150°C
- ✧ **Temperature Coefficient:** ± 150 ppm/°C
- ✧ **RoHS Compliant**

Outline Drawing (mm)